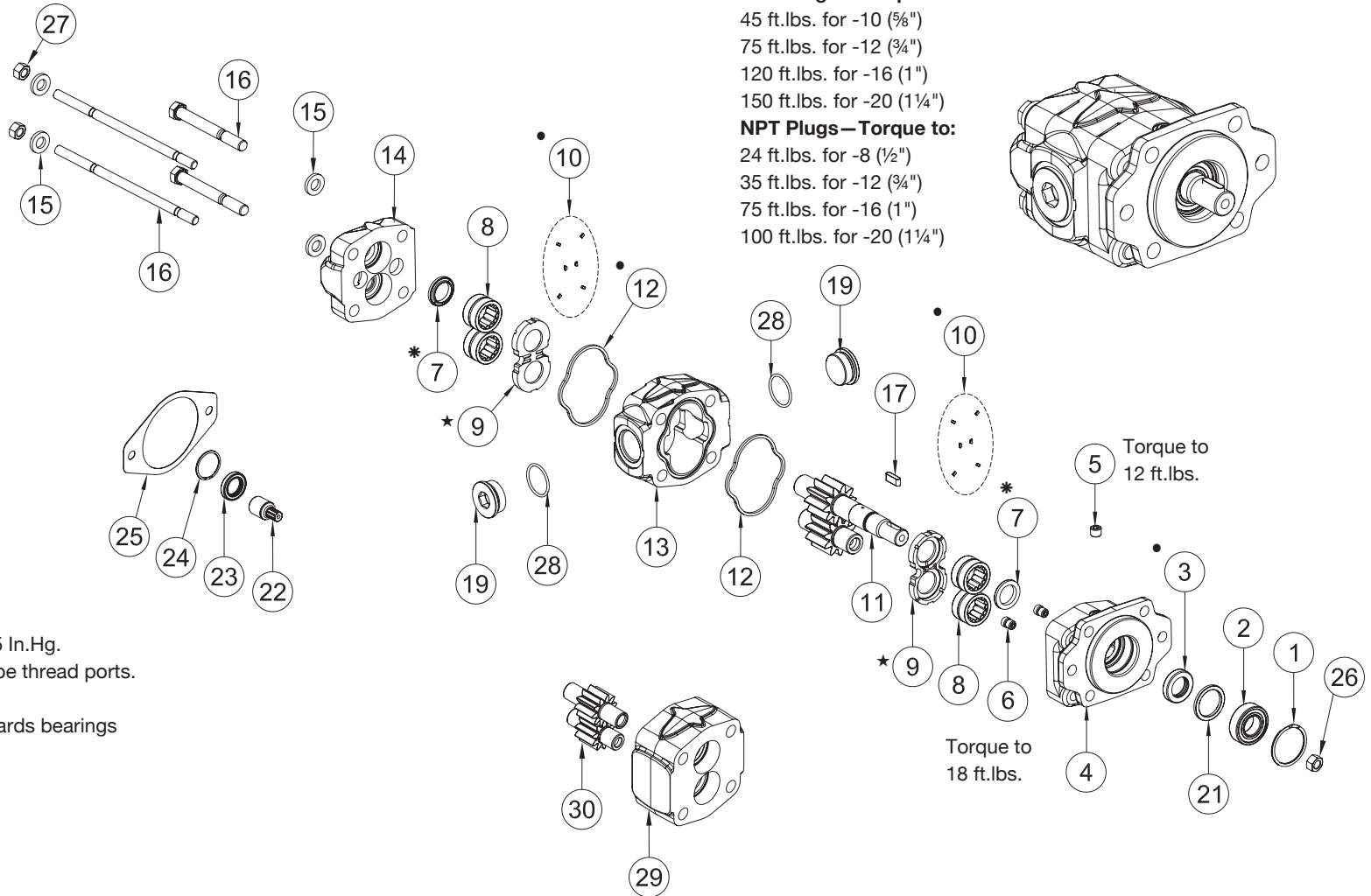




K SERIES PUMP/MOTOR SERVICE PARTS

DESIGN NUMBER 1

Torque Bolts/Nuts
to 155 ft.lbs.
Oil threads and
washer side of
head/nut for
proper torque

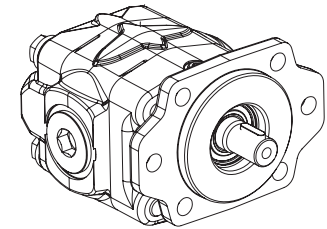


SAE Plugs—Torque:

- 45 ft.lbs. for -10 (5/8")
- 75 ft.lbs. for -12 (3/4")
- 120 ft.lbs. for -16 (1")
- 150 ft.lbs. for -20 (1 1/4")

NPT Plugs—Torque to:

- 24 ft.lbs. for -8 (1/2")
- 35 ft.lbs. for -12 (3/4")
- 75 ft.lbs. for -16 (1")
- 100 ft.lbs. for -20 (1 1/4")



NOTE: Maximum vacuum is 5 In.Hg.
Do not use Teflon Tape on pipe thread ports.

- * Ring seal slot goes towards bearings
- Included in seal kit
- , * Included in rebuild kit



A Member of the Interpump Group

SP08-02 (Rev. 07-21)

201 East Jackson Street, Muncie, Indiana 47305
800-367-7867 • Fax: 765-284-6991 • info@munciepower.com

Specifications are subject to change without notice. Visit www.munciepower.com
for warranties and literature. All rights reserved. © Muncie Power Products, Inc. (2010)

K SERIES PUMP/MOTOR SERVICE PARTS

Item	Description	Qty	Muncie Number
1	Spacer Snap Ring.....	1	PS1-1004-D
2	O.B. Bearing 3/8 Round.....	1	PK1-1002
3	• Shaft Seal High Pressure (GFN).....	1	PS1-1005
	Shaft Seal Low Pressure (BUN).....	1	PK1-1005
4	Front Cover		
	SAE A Flange 2-bolt.....	1	PK1-1007-ALPAB
	SAE B Flange 2-bolt short.....	1	PK1-1007-HSXXX
	SAE B Flange 4-bolt.....	1	PK1-1007-KLPAB
	SAE B Flange 6-bolt.....	1	PK1-1007-BLPAB
	G Flange.....	1	PK1-1007-GSXXX
	Remote Mount	1	PK1-1007-RLPAB
	Clutch Pump Remote Mount ..	1	PK1-1007-RLPABC
5	Pipe Plug -4 NPTF	1	HHPP-4Z
6	Check Valve Assembly.....	2	PS1-1010
7	Ring Seal.....	2 or 3(RV)....	PS1-1008
8	Bearing.....	4	PS1-1013
9	★ Wear Plate	2	PS1-1014
10	• Pocket Seals (12 Pieces).....	1	PS1-1009-SK
11	Gear Set		
	3/4-11T		
	8GPM.....	1	PK1-1016-S16-08-2
	11GPM.....	1	PK1-1016-S16-11-2
	13GPM.....	1	PK1-1016-S16-13-2
	5/8-13T		
	4GPM.....	1	PK1-1016-S02-04-2
	6GPM.....	1	PS1-1016-S02-06-2
	8GPM.....	1	PK1-1016-S02-08-2
	11GPM.....	1	PK1-1016-S02-11-2
	13GPM.....	1	PS1-1016-S02-11-2
	15GPM.....	1	PK1-1016-S02-15-2
	17GPM.....	1	PS1-1016-S02-15-2
	7/8-13T Short		
	8GPM.....	1	PKS1-1016-S02-08-2
	11GPM.....	1	PKS1-1016-S02-11-2
	13GPM.....	1	PKS1-1016-S02-13-2
	15GPM.....	1	PKS1-1016-S02-15-2
	17GPM.....	1	PKS1-1016-S02-17-2
	7/8-13T Tandem		
	8GPM.....	1	PK1-1016-S02-08-TV2
	11GPM.....	1	PK1-1016-S02-11-TV2
	13GPM.....	1	PK1-1016-S02-13-TV2
	7/8-13T Tandem (Short)		
	13GPM.....	1	PKS1-1016-S02-13T2
	17GPM.....	1	PKS1-1016-S02-17T2
	3/8 Rnd. Shaft		
	4GPM.....	1	PK1-1016-K09-04-2
	6GPM.....	1	PK1-1016-K09-06-2
	8GPM.....	1	PK1-1016-K09-08-2
	11GPM.....	1	PK1-1016-K09-11-2
	13GPM.....	1	PK1-1016-K09-13-2
	15GPM.....	1	PK1-1016-K09-15-2
	17GPM.....	1	PK1-1016-K09-17-2
	3/8 Rnd. Shaft Tandem		
	6GPM.....	1	PK1-1016-K09-06-TV2
	1.0"-15T		
	17GPM.....	1	PK1-1016-S17-17-2
	1.0"-15T Tandem		
	17GPM.....	1	PK1-1016-S17-17-TV2
	Tapered		
	13GPM.....	1	PK1-1016-T04-13-2

Item	Description	Qty	Muncie Number
12	• Body Seal.....	2	PS1-1015
13	Body		
	4GPM -8NPT x -8NPT	1	PK1-1025-04-PBN
	6GPM -12NPT x -12NPT	1	PK1-1025-06-PBX
	8GPM -16NPT x -16NPT	1	PK1-1025-08-PCH
	11GPM -16NPT x -16NPT	1	PK1-1025-11-PCH
	13GPM -20NPT x -20NPT	1	PK1-1025-13-PCR
	15GPM -20NPT x -20NPT	1	PK1-1025-15-PCR
	17GPM -20NPT x -20NPT	1	PK1-1025-17-PCR
	4GPM -10SAE x -10SAE	1	PK1-1025-04-SFM
	6GPM -12SAE x -12SAE	1	PK1-1025-06-SFX
	8GPM -16SAE x -16SAE	1	PK1-1025-08-SGI
	11GPM -16SAE x -16SAE	1	PK1-1025-11-SGI
	13GPM -20SAE x -20SAE	1	PK1-1025-13-SGT
	15GPM -20SAE x -20SAE	1	PK1-1025-15-SGT
	17GPM -20SAE x -20SAE	1	PK1-1025-17-SGT
	13GPM TSP -16SAE x -16SAE ..	2	PK1-1025-13-SGI
	17GPM TSP -16SAE x -16SAE ..	2	PK1-1025-17-SGI
14	Rear Cover		
	-16NPT x -16NPT	1	PK1-1026-PCH
	-16SAE x -16SAE	1	PK1-1026-SGI
	Machined for RV, SAE	1	PK1-1026-SDRRV
	Tandem Versatile	1	PK1-1026-TVH
15	Washer	4	PS1-1029
16	Capscrew		
	4GPM (9/16-12UNC x 4)	4	PS1-1028-06
	6GPM (9/16-12UNC x 4 1/4).....	4	PK1-1028-06
	8GPM (9/16-12UNC x 4 1/2).....	4	PK1-1028-11
	11GPM (9/16-12UNC x 4 1/2).....	4	PK1-1028-11
	13GPM (9/16-12UNC x 5).....	4	PK1-1028-15
	15GPM (9/16-12UNC x 5 1/2).....	4	PS1-1028-11
	17GPM (9/16-12UNC x 5 1/2).....	4	PK1-1028-17
	17GPM (9/16-12UNC x 5 3/4).....	4	PS1-1028-15
	Stud		
	TSP (9/16-12UNC x 10 1/2).....	2	PK1-1028-307S
	TSP (9/16-12UNC x 11 1/2).....	2	PK1-1028-317S
	TSP (9/16-12UNC x 12 1/2).....	2	PK1-1028-322S
17	Key	1	PK1-1017
	Woodruff Key (Tapered).....	1	PH1-1017-W
19	Port Plug		
	-8 NPTF	2	HHPP-8Z
	-12 NPTF	2	HHPP-12Z
	-16 NPTF	2	HHPP-16Z
	-20 NPTF	2	HHPP-20Z
	1 1/16-12UN SAE J514.....	2	HHBP-12Z
	1 5/16-12UN SAE J514	2	HHBP-16Z
	1 7/8-12UN SAE J514	2	HHBP-20Z
21	Seal Spacer.....	1	PS1-1002D
	Seal Spacer (Short).....	1	PS1-1001D

Item	Description	Qty	Muncie Number
22	Connection Shaft Tandem		
	Versatile 3/8-13T	1	PK1-1033-TV
	Shortstack	1	PK1-1033-TS
23	Connection Shaft Seal		
	TV Only	1	PL1-1005
24	Connection Shaft Seal Snap		
	Ring TV Only	1	PL1-1004
25	Rear Flange Gasket for TV.....	1	PL1-1032-TV
26	Nut (1/2-20UNF) (tapered only clutch mount)....	1	PH1-1020
27	Nut (9/16-12UNC) (TSP Only)	4	PK1-1020
28	O-Ring		
	0.76 x 0.10 (For HHBP-10).....	2	BOR-10
	0.92 x 0.12 (For HHBP-12).....	2	BOR-12
	1.18 x 0.12 (For HHBP-16).....	2	BOR-16
	1.47 x 0.12 (For HHBP-20).....	2	BOR-20
29	Bearing Carrier Unported TSP.....	1	PK1-1031-XX
30	Tandem Idler Set		
	8GPM	1	PK1-1023-8-TV2
	11GPM	1	PK1-1023-11-TV2
	13GPM	1	PK1-1023-13-TV2
	17GPM	1	PK1-1023-17-TV2

KITS	Description	Muncie Number
N.S.	Seal Kit	
	"K" Series Standard	kit GSK-PK-12
	"KS"	kit GSK-PKS-12
	Rebuild Kit.....	kit RBK-PK-12
	Bearing Kit.....	kit PS1-1013-K
	Relief Valve.....	1 MESP249A30
	(Torque to 32 ft.lbs.)	