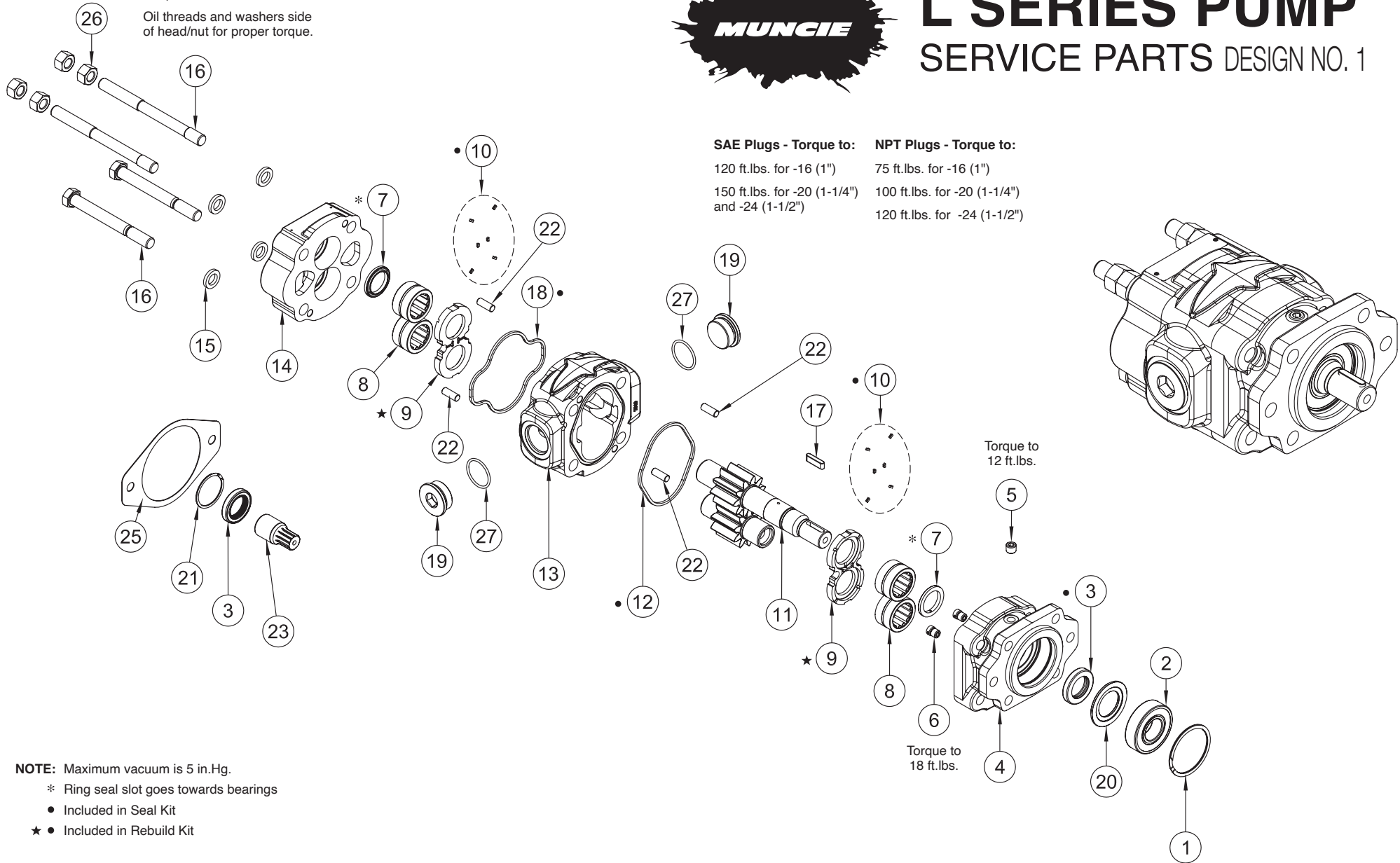




L SERIES PUMP

SERVICE PARTS DESIGN NO. 1

Torque bolts/nuts to 200 ft.lbs.
Oil threads and washers side
of head/nut for proper torque.



SAE Plugs - Torque to:
120 ft.lbs. for -16 (1")
150 ft.lbs. for -20 (1-1/4")
and -24 (1-1/2")

NPT Plugs - Torque to:
75 ft.lbs. for -16 (1")
100 ft.lbs. for -20 (1-1/4")
120 ft.lbs. for -24 (1-1/2")

Torque to
12 ft.lbs.

Torque to
18 ft.lbs.

NOTE: Maximum vacuum is 5 in.Hg.

* Ring seal slot goes towards bearings

● Included in Seal Kit

★ ● Included in Rebuild Kit



A Member of the Interpump Group

SP08-01 (Rev. 03-21)

201 East Jackson Street • Muncie, Indiana 47305
800-367-7867 • Fax 765-284-6991 • info@munciepower.com • www.munciepower.com
Specifications are subject to change without notice. Visit www.munciepower.com
for warranties and literature. All rights reserved. © Muncie Power Products, Inc. (2009)

L SERIES SERVICE PARTS

ITEM	DESCRIPTION	QTY.	MUNCIE PART NO.	ITEM	DESCRIPTION	QTY.	MUNCIE PART NO.
1	O.B. Snap Ring	1	PL1-1001		23 GPM -20 SAE x -20 SAE	1	PL1-1125-23-SGT
2	O.B. Bearing	1	PL1-1002		25 GPM -24 SAE x -24 SAE	1	PL1-1125-25-SHE
	Retainer/Spacer	1	PE1-1002-D		27 GPM -24 SAE x -24 SAE	1	PL1-1125-27-SHE
3	Shaft Seal	1	PL1-1005M		30 GPM -24 SAE x -24 SAE	1	PL1-1125-30-SHE
	Low Pressure (BUN)	1	PL1-1005M		27 GPM -32 SF x -16 SAE	1	PL1-1125-27-CFS
	High Pressure (GFN)	1	PL1-1005				
4	Front Cover	1	PL1-1107-DSPAB	14	Rear Cover	1	PL1-1126-XXX
	SAE "B" 6-Bolt Short	1	PL1-1107-DLPAB		No Ports	1	PL1-1126-PCR
	SAE "B" 6-Bolt Long	1	PL1-1107-KLPAB		-20 NPT x -20 NPT	1	PL1-1126-PDB
	SAE "B" 4-Bolt Long	1	PL1-1107-CLXXX		-24 NPT x -24 NPT	1	PL1-1126-SGT
	SAE "C" Round Shaft Long	1	PL1-1107-RLPAB		-20 SAE x -20 SAE	1	PL1-1126-CZM
	Remote Mount	1	PL1-1107-TSXXX		-24 NPT inlet x -12 SAE outlet	1	PL1-1126-PCHRV
	Remote Mount Dbl Rnd Sht	1	PL1-1107-TSXXX		Machined for RV, NPT	1	PL1-1126-SDRRV
5	Pipe Plug -4 NPTF	1	HHPP-4Z		Machined for RV, SAE	1	PL1-1126-SDRRV
6	Check Valve Assembly	2	PS1-1010		Versatile SAE "B" 2-bolt	1	PL1-1126-TVH
7	Ring Seal	2 or 3	PL1-1008	15	5/8" Washer	4	PE1-1230
8	Bearings	4	PL1-1013	16	Capscrew	2 or 4	PL1-1028-14
9	Wear Plate	2	PL1-1014		14 GPM (5/11 UNC x 5 1/4)	2 or 4	PL1-1028-16
10	Pocket Seals (12 Pieces)	1	PS1-1009EK		16 GPM (TVPL-25) (5/11 UNC x 5 1/2)	2 or 4	PL1-1028-19
11	Gear Set	1	PL1-1016-S02-14-2		19 GPM (TVPL-27) (5/11 UNC x 5 3/4)	2 or 4	PL1-1028-23
	3/8 - 13T 14 GPM	1	PL1-1016-S02-16-2		23 GPM (5/11 UNC x 6)	2 or 4	PL1-1028-25
	16 GPM	1	PL1-1016-S02-19-2		25 GPM (5/11 UNC x 6 1/4)	2 or 4	PL1-1028-27
	19 GPM	1	PL1-1016-S02-23-2		27 GPM (5/11 UNC x 6 1/2)	2 or 4	PL1-1028-30
	23 GPM	1	PL1-1016-S02-25-2		30 GPM (5/11 UNC x 6 3/4)	2 or 4	PL1-1028-294
	25 GPM	1	PL1-1016-S02-27-2		14 GPM Versatile (5/11 UNC x 4 1/2)	4	PL1-1028-341
	27 GPM	1	PL1-1016-S02-30-2		16 GPM Versatile (5/11 UNC x 4 3/4)	4	PL1-1028-295
	30 GPM	1	PL1-1016-K01-16-2		19 GPM Versatile (5/11 UNC x 5)	4	PL1-1028-14
	1 inch Round Shaft	1	PL1-1016-K01-19-2		23 GPM Versatile (5/11 UNC 5 1/4)	4	PE1-1028-23S
	19 GPM	1	PL1-1016-K01-23-2		14 GPM (5/11 UNC x 7)	2	PL1-1028-16S
	19 GPM	1	PL1-1016-K01-25-2		16 GPM (5/11 UNC x 7 1/4)	2	PE1-1028-27S
	23 GPM	1	PL1-1016-K01-27-2		19 GPM (5/11 UNC x 7 1/2)	2	PL1-1028-23S
	25 GPM	1	PL1-1016-K01-30-2		23 GPM (5/11 UNC x 7 3/4)	2	PL1-1028-25S
	27 GPM	1	PL1-1016-S17-19-2		25 GPM (5/11 UNC x 8)	2	PL1-1028-27S
	1 inch 15T Spline	1	PL1-1016-S17-27-2		27 GPM (5/11 UNC x 8 1/4)	2	PL1-1028-30S
	19 GPM	1	PL1-1016-S17-30-2		30 GPM (5/11 UNC x 8 1/2)	2	
	27 GPM	1	PL1-1016-K07-23-2	17	Key 1/4" x 3/8" x 1 1/4" (01 Shaft)	1	PS1-1017
	25 GPM	1	PL1-1016-K07-25-2		Key 5/16" x 15/32" x 1 1/2" (07 Shaft)	1	PM1-1017
	27 GPM	1	PL1-1016-K07-27-2	18	Rear Cover Body Seal 4.98 x 0.134	1	PL1-1015
	1 1/4 inch Round Shaft	1	PL1-1016-S02-14-TV2	19	Port Plug	2	HHPP-16Z
	23 GPM	1	PL1-1016-S02-16-TV2		-16 NPTF	2	HHPP-20Z
	25 GPM	1	PL1-1016-S02-19-TV2		-20 NPTF	2	HHPP-24Z
	27 GPM	1	PL1-1016-S02-23-TV2		-24 NPTF	2	HHBP-16Z
	Versatile 3/8 - 13T	1	PL1-1016-S17-19-TV2		1 5/16-12UN SAE J514	2	HHBP-20Z
	14 GPM	1	PL1-1016-S17-23-TV2		1 5/8-12UN SAE J514	2	HHBP-24Z
	16 GPM	1	PL1-1016-S17-25-TV2		1 7/8-12UN SAE J514	2	
	19 GPM	1	PL1-1016-S17-27-TV2	20	Seal Retainer for use with O.B. Bearing	1	PL1-1003
	23 GPM	1	PL1-1016-S17-30-TV2	21	Seal Snap Ring 2 inch	1 or 2	PL1-1004
	25 GPM	1	PL1-1016-S17-25-TV2	22	Dowel Pin 3/8 x 1 inch	4	PL1-1024
	27 GPM	1	PL1-1016-S17-27-TV2	23	Connection Shaft for Tandem Versatile	1	PL1-1033-TV
12	Front Cover Body Seal 4.23 x 0.134	1	PL1-1012	23	Connection Shaft for Tandem Short Stack	1	PL1-1033-TS
13	Body	1	PL1-1125-14-PCH	25	Rear Flange Gasket for TV	1	PL1-1032-TV
	14 GPM -16 NPT x -16 NPT	1	PL1-1125-16-PCH	26	Nut (5/11 UNC)	4	PE1-1020
	16 GPM -16 NPT x -16 NPT	1	PL1-1125-19-PCR	27	O-Ring	2	BOR-16
	19 GPM -20 NPT x -20 NPT	1	PL1-1125-23-PCR		1.50 x 0.12 for HHBP-20	2	BOR-20
	23 GPM -20 NPT x -20 NPT	1	PL1-1125-25-PDB		1.72 x 0.12 for HHBP-24	2	BOR-24
	25 GPM -24 NPT x -24 NPT	1	PL1-1125-27-PCR	N.S.	Seal Kit	kit	GSK-PL-12
	27 GPM -20 NPT x -20 NPT	1	PL1-1125-27-PDB		Rebuild Kit	kit	RBK-PL-12
	27 GPM -24 NPT x -24 NPT	1	PL1-1125-30-PDB		Bearing Kit	kit	PL1-1013-K
	30 GPM -24 NPT x -24 NPT	1	PL1-1125-16-SGI		Relief Valve	1	1224V1 (Torque to 45 ft. lbs.)
	16 GPM -16 SAE x -16 SAE	1	PL1-1125-19-SGT				